

Next steps

TMR, Queensland Rail and ActivUs have formed the LGC Rail Alliance to deliver the LGC Rail package.

The LGC Rail package scope of work includes doubling the number of tracks between Kuraby and Beenleigh from two to four, removing level crossings, modern station upgrades, and improving access and connectivity along the complex 20-kilometre project corridor.

ActivUs is currently undertaking site investigations to inform further design development ahead of major construction works starting later in 2026.

The \$5.75 billion LCG Rail project is jointly funded (on a 50:50 basis) by the Australian and Queensland governments.

Scan the QR code to visit the online engagement hub at www.yoursay-projects.tmr.qld.gov.au/logan-and-gold-coast-faster-rail to have your say and sign up for future updates.



Logan and Gold Coast Faster Rail

Kingston station precinct

November 2025

Updated design

The 2023 Refined Reference Design (RRD) required the existing Kingston Road bridge to be rebuilt to accommodate the wider rail corridor underneath.

As part of the tender process for the Logan and Gold Coast Faster Rail (LGC) project, the Department of Transport and Main Roads (TMR) asked proponents to innovate and consider options to address prior community feedback.

As a result, TMR has adopted a solution which will better integrate the station with the Kingston Butter Factory Cultural Precinct, an important historical community and cultural hub, with improved station entry points and bus stops off Milky Way.

Other updates to the design include:

- repositioning Kingston station away from the Kingston Road bridge avoids the need to rebuild the bridge, significantly reducing community disruption

- a rebalanced park 'n' ride on both sides of the station encourages improved access and capacity for customers
- on the southern side, the repositioned connection to the Kingston Butter Factory Cultural Precinct preserves melaleuca trees along Milky Way and ensures safe access from the car park and bus stops while enhancing pedestrian flow to cater for events.



Artist impression of new Kingston station, subject to change.



Artist impression of new Kingston station, subject to change.

For more information visit our website

Mo nisi fa'amatalaga, asiasi le matou upega tafa'ilagi

ਹੋਰ ਜਾਣਕਾਰੀ ਲਈ, ਸਾਡੀ ਵੈੱਬਸਾਈਟ 'ਤੇ ਜਾਓ

欲了解更多信息, 请访问我们的网站

تنترت نالالى لىل عانق قوم ةرايىب مقى تامولعمل لىل نم دى زملى

 tmr.qld.gov.au/logangoldcoastrail

 1800 957 066 (all hours)

 lgcrail@activusalliance.com.au

 Contact us for alternative accessible formats

13 QGOV (137468)

www.tmr.qld.gov.au | www.qld.gov.au



Australian Government

BUILDING AUSTRALIA

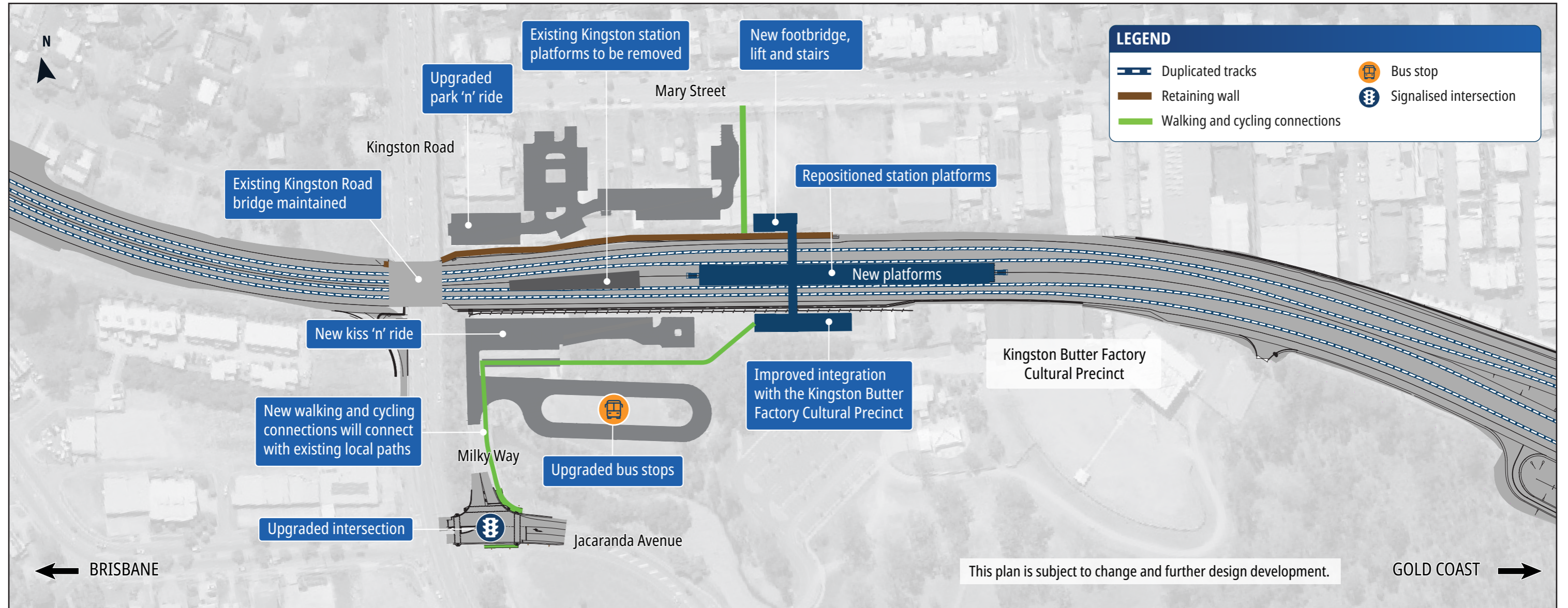


Queensland Rail



Queensland Government

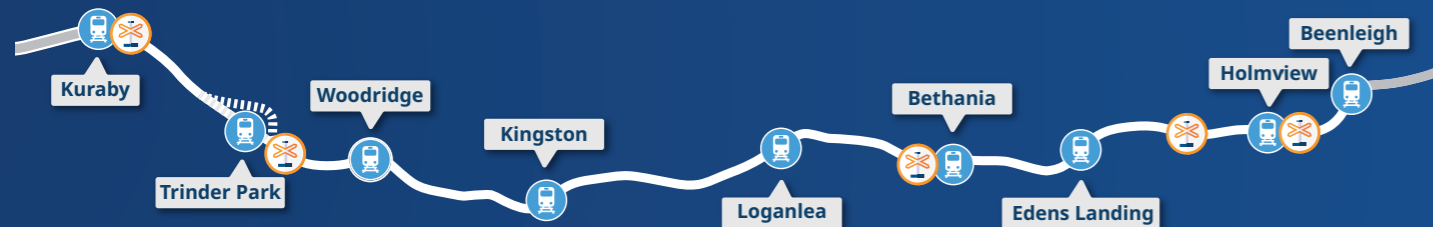
Kingston station precinct updated design



How community feedback shaped the updated design

In late 2023, TMR sought public feedback on the Refined Reference Design for the whole LGC project, including the removal of five level crossings between Kuraby and Beenleigh.

TMR has worked with ActivUs to incorporate community feedback into the updated design for the Kingston station precinct, to further improve accessibility, safety and customer experience.



What you told us

Suggestions to better integrate Kingston station with bus connections and pedestrian paths.

Better integration and connection with Kingston Butter Factory Cultural Precinct.

What we are doing

A repositioned station connection to the Kingston Butter Factory Cultural Precinct enhances pedestrian flow and safe access to and from the car park and bus zone.

A rebalanced park 'n' ride on the northern side of the station improves access and capacity for customers from the north and encourages future development along Mary Street.

Repositioning the station away from Kingston Road bridge avoids the need to rebuild the bridge, significantly reducing community disruption.