



Direct Sunshine Coast Rail Line

Beerwah station

Beerwah station is located adjacent to the town centre between Simpson Street and Beerwah Parade. Sunshine Coast/Gympie North rail services currently stop at Beerwah station.

This new rail line is proposed to tie into the existing North Coast Line, north of Beerwah station. This would mean that trains operating on the proposed Direct Sunshine Coast Rail Line would continue to the Brisbane CBD and beyond, without passengers needing to transfer at Beerwah.

Passengers will also be able to transfer between rail services on the existing North Coast Line and the Direct Sunshine Coast Rail Line at Beerwah station, as well as undertake multi-modal transfers to and from bus, kiss 'n' ride, park 'n' ride and active transport.

The existing Beerwah station is proposed to be upgraded and accommodate an additional third platform, with all platforms designed to also support longer trains.

The following features are proposed to be included in the design for the upgraded Beerwah station:

- Accessible station with three tracks, serviced by two side platforms and an island platform. All platforms will be future-proofed to accommodate 9-car trains.
- This station will include upgraded and expanded park 'n' ride facilities. The location and configuration for a park 'n' ride facility to the east of the corridor is still being investigated. The existing park 'n' ride to the west of the station is proposed to be maintained in its current location.
- Bus interchange and kiss 'n' ride (drop off zone)
- Station facilities including ticket office, public toilets, end-of-trip facilities (cycle and scooter storage), CCTV and lighting.
- Overpasses to provide access into the station, and between both sides of the station
- New and upgraded active transport facilities around the station precinct, including connection to an active transport facility which is proposed to be located adjacent to the Direct Sunshine Coast Rail Line.



TMR undertook consultation on the Direct Sunshine Coast Rail Line stations in mid-2023. The community was encouraged to provide feedback on the alignment, stations and active transport.

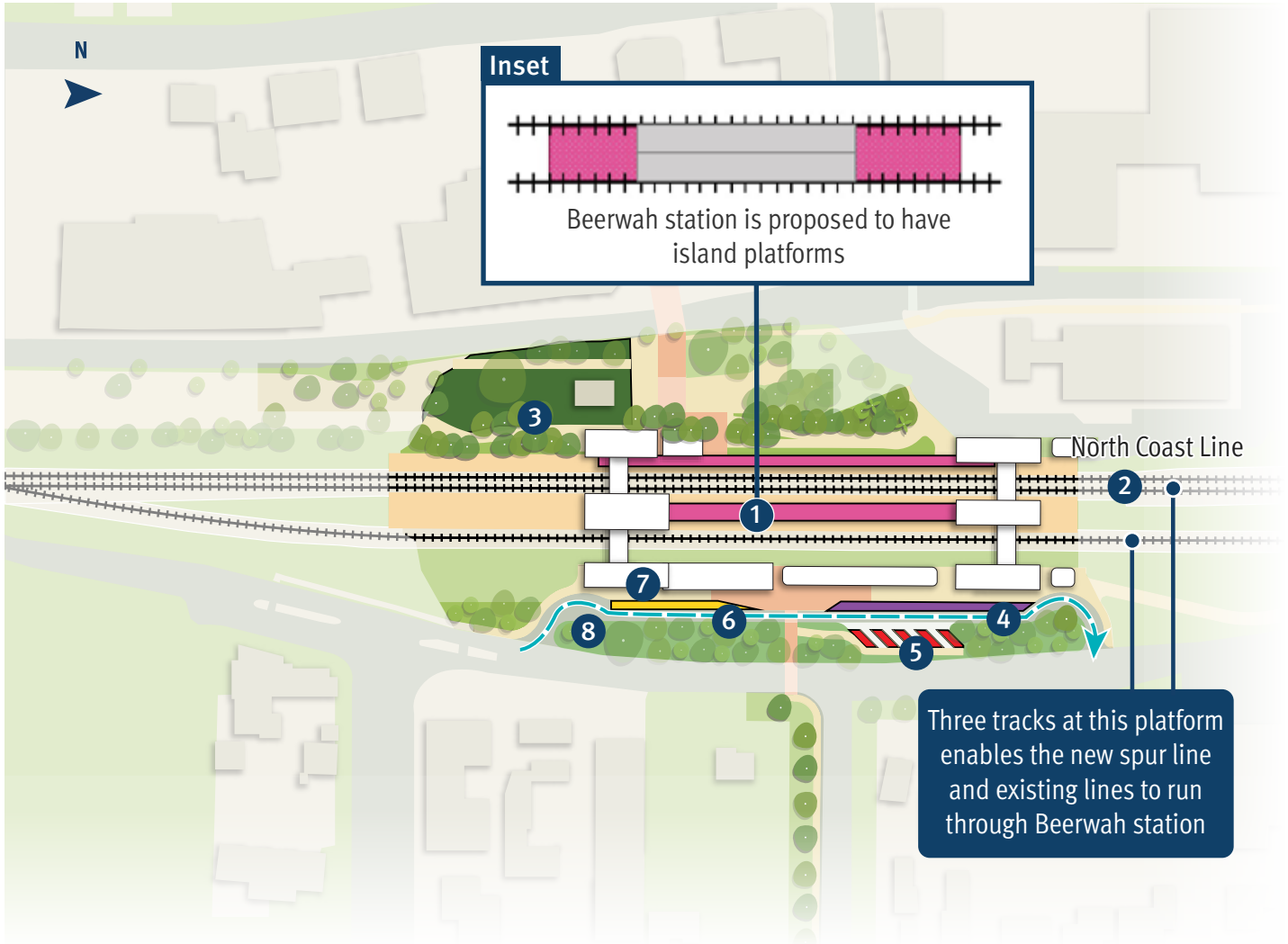
What you told us about Beerwah station:

- Park ‘n’ ride is needed at this location
- Feedback about platform and rail line configuration
- Accessible design for disability access (platforms and all elements of the station, including facilities), bicycle access and consideration of transfers for people with luggage
- Importance of connection to buses
- Importance of ample shade and weather protection
- Information boards about nearby recreation activities would be useful
- Pedestrian underpasses beneath the station are preferred, rather than overpasses.

How this is being considered in the business case design:

- New and upgraded stations will be accessible for all customers.
- The main entrance to the station has been designed to face the town centre and is proposed to include wayfinding, active transport links, public art and information boards.
- The existing park ‘n’ ride site on the west of the station is proposed to be retained in its current location. Sites for an expanded park ‘n’ ride are currently under investigation.
- Beerwah station will include adjacent bus stops. Modelling and service planning for connecting bus services is included in the business case scope.
- All stations will have storage for cycling and scooters.
- A new high-quality active transport facility is proposed to start at Beerwah station and follow the Direct Sunshine Coast Rail Line alignment north.
- Existing trees are to be retained where possible and infill planting and revegetation is included in design considerations.
- Overpasses to connect the east and west sides of Beerwah station, have been identified as the most appropriate solution to provide connectivity across the rail line considering potential property impacts, hydraulics and safety in design.
- The business case design for all stations includes concept designs for platform configuration and the station building. Detailed design, including more specific details about station facilities, will be undertaken in future phases of the project. Community feedback received during the business case phase will be considered as future design progresses.

Beerwah station map (updated concept layout)



Legend

- 1 Station layout (elevated station, island platforms) - see inset
- 2 Dual track
- 3 Landscaping
- 4 Kiss 'n' ride
- 5 Disability parking bays and station staff parking
- 6 Bus bays
- 🚲 7 Cycle storage
- 8 One way station access lane

All elevated (2 storey) stations to include lifts and stairs.

Options are being investigated for the Beerwah park 'n' ride location.

Beerwah station access and features

Getting to and from stations

In addition to connections with the Sunshine Coast Public Transport project, the Direct Sunshine Coast Rail Line project includes upgrades to the bus network to ensure communities along the route have efficient connections to stations.

In line with the Southern Sunshine Coast Public Transport Strategy, we're planning to introduce new routes between stations, key destinations, and surrounding areas. This will improve travel right across the region.



Scan the QR code to view all DSC Rail Line station concept layouts and a map of proposed corridor refinements.



Accessibility

All stations will be accessible to everyone in our community.



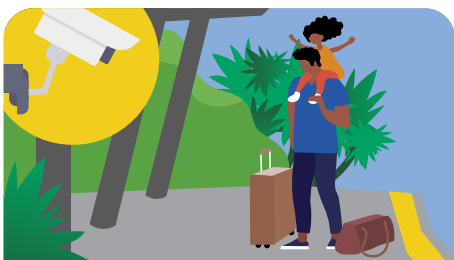
Active transport

To support active transport options, stations will feature facilities and infrastructure to accommodate bikes and other micro-mobility devices.



Passenger comfort

Seating, shelters and nearby water refill points will ensure comfortable journey experiences, with toilets provided at major interchange stations.



Safety

In accordance with Crime Prevention Through Environmental Design (CPTED) principles, stations will include CCTV cameras, lighting and help points.



Ticketing and information

Customer information will be provided via display screens, timetables and hearing loops, with ticketing facilities also included.

Contact us

-  1800 407 533 (8.30am to 4.30pm)
-  scpublictransport@tmr.qld.gov.au
-  Sunshine Coast Public Transport Department of Transport and Main Roads PO Box 1600 Maroochydore QLD 4558