

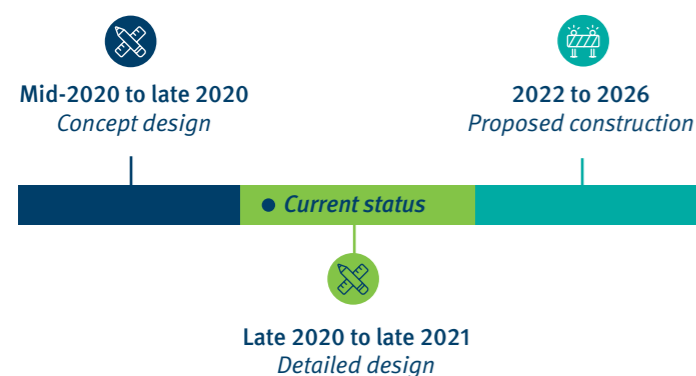
Upcoming events

TMR is conducting a series of public information sessions where community members will have the opportunity to share their views on the design and receive the latest project news.

- Beef Week – Monday 3 May to Friday 7 May 2021, 8.30am – 5.30pm (Sidney Kidman Pavilion, stand SK54)
- Stockland Shopping Centre – Monday 10 May to Sunday 23 May 2021, 9am – 5pm (Thursday until 7pm)
- Gracemere Shopping World – Tuesday 25 May 2021, 9am – 4pm Saturday 29 May 2021, 9am – 4pm
- Parkhurst Town Centre – Thursday 3 June 2021, 9am – 6pm Saturday 5 June 2021, 9am – 4pm
- Rockhampton Agricultural Show – Wednesday 9 June to Friday 11 June 2021 (Walter Pierce Pavilion)

Key facts

- A new 14.7km ring road will be delivered with a total of 17.4km of new road being constructed.
- 17 new bridge crossings, including a new 250-metre bridge crossing of the Fitzroy River.
- Key links into the city, improving connectivity to important Rockhampton facilities and services.
- High level of flood immunity, similar to a 1 in 100 year flood event and equivalent to 9.86m on the Rockhampton flood gauge in the Fitzroy River (a 1 per cent Annual Exceedance Probability).
- Travel time savings of up to 15 minutes by avoiding 19 sets of traffic signals through Rockhampton.
- Two-lane highway between Capricorn Highway and West Rockhampton Connection.
- Four-lane highway between West Rockhampton Connection and Bruce Highway/Rockhampton-Yeppoon Road intersection.



Stay informed

- www.tmr.qld.gov.au/rockhamptonringroad
- RockhamptonRingRoad@tmr.qld.gov.au
- 1800 411 650*
- Scan the QR code below with your phone

*Free call from anywhere in Australia, call charges apply for mobile phones and payphones. Check with your service provider for call costs.



Rockhampton Ring Road

Driving Central Queensland's future
May 2021

Visualisation – Rockhampton Ring Road – bridging over Fitzroy River

The Rockhampton Ring Road is a major infrastructure project within the Central Queensland region. It will improve road safety and strengthen the region's economy by improving freight efficiency, flood resilience and job opportunities. The project will also strengthen connectivity between key employment, leisure, tourism and residential growth areas of Rockhampton and the wider region.

The Rockhampton Ring Road will provide a western link of the Bruce Highway through Rockhampton extending from the Capricorn Highway between Rockhampton and Gracemere in the south, to Rockhampton-Yeppoon Road/Bruce Highway intersection in the north and will include a new crossing of the Fitzroy River between Pink Lily and Kawana.

It will improve access to the city and significantly reduce congestion by providing an alternative route for heavy vehicles, improving overall safety and amenity for Rockhampton.

Construction funding



\$1 Billion

The Australian Government has committed \$800 million and the Queensland Government has committed \$200 million.

Current status

The detailed design phase commenced in September 2020 and is being delivered by Jacobs SMEC Design Joint Venture.

The detailed design phase will refine the concept design in consideration of further stakeholder consultation, traffic

efficiency and functionality, improved safety, increased resilience to flooding, improved connectivity and accessibility, integrating environment and cultural heritage requirements and undertaking additional site investigations to support the design.

During this phase, investigations will determine noise mitigation and property access requirements, local road connectivity changes, active transport (bike riding) facilities and confirm improved connectivity to important facilities within Rockhampton.

Rockhampton Ring Road benefits

- Improves safety
- Improves network efficiency
- Reduces peak hour congestion
- Reduces travel time
- Improves ride quality
- Contributes to economy
- Increases capacity
- Better road access
- Contributes to regional growth
- Improves flood immunity

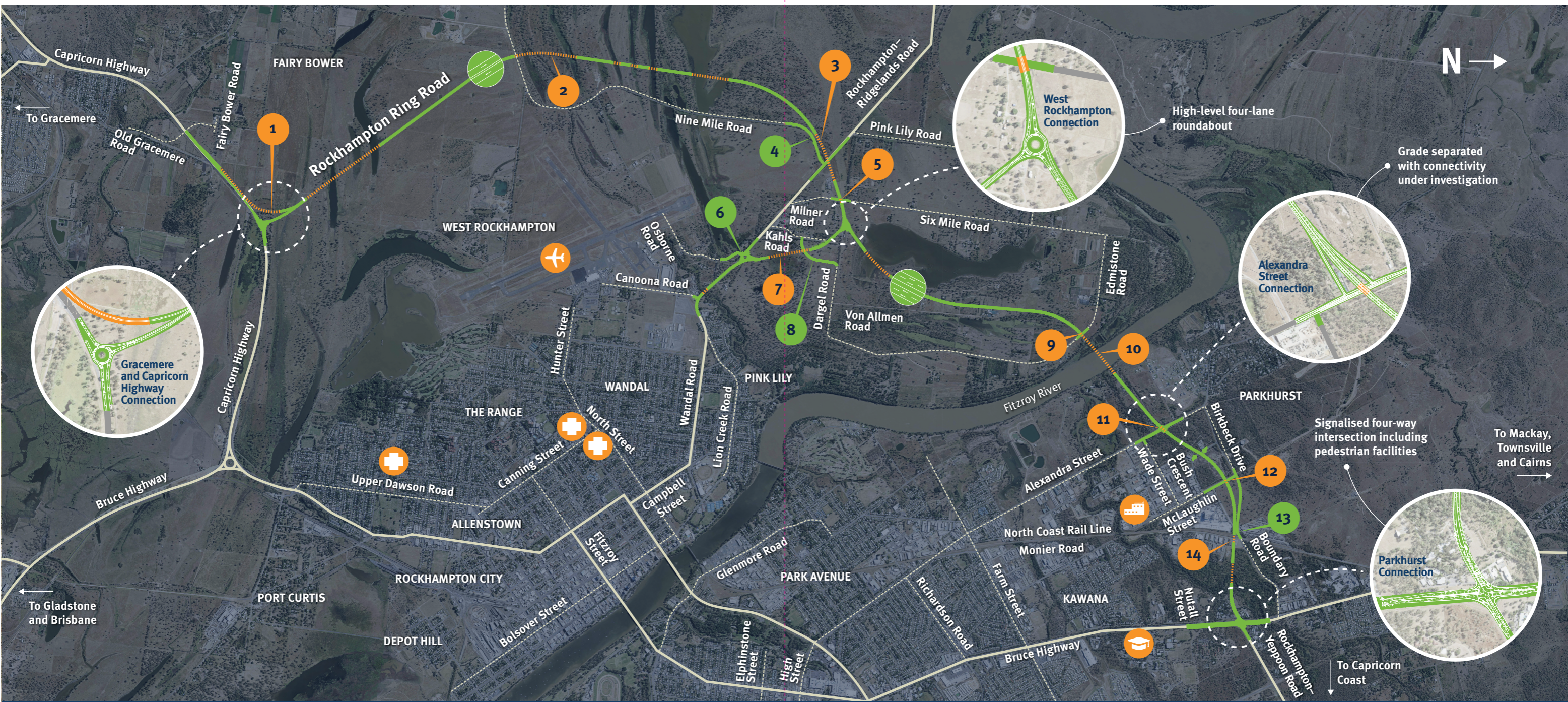


Australian Government

BUILDING OUR FUTURE



Queensland Government



Rockhampton Ring Road

- New bridges
- New roads and upgraded local roads
- State-controlled road
- - - - Key local road
- Airport
- Health precincts
- University
- Industrial area
- Key Rockhampton Ring Road connection
- Two-lane highway between Capricorn Highway connection and West Rockhampton connection
- Four-lane highway between West Rockhampton connection and Bruce Highway/Rockhampton- Yeppoon Road intersection
- 1** Capricorn Highway connection with high-level slip-lane bridge to Gracemere
- 2** Nine Mile Road overpass
- 3** Rockhampton-Ridgels Road overpass
- 4** Nine Mile Road realignment
- 5** Six Mile Road overpass
- 6** Rockhampton-Ridgels Road connection including realignment of Osborne Road
- 7** Milner Road overpass
- 8** Milner Road realignment
- 9** Edmistine Road overpass
- 10** Four-lane bridge across the Fitzroy River
- 11** Alexandra Street overpass
- 12** McLaughlin Street overpass
- 13** Boundary Road realignment
- 14** Monier Road and rail overpass